

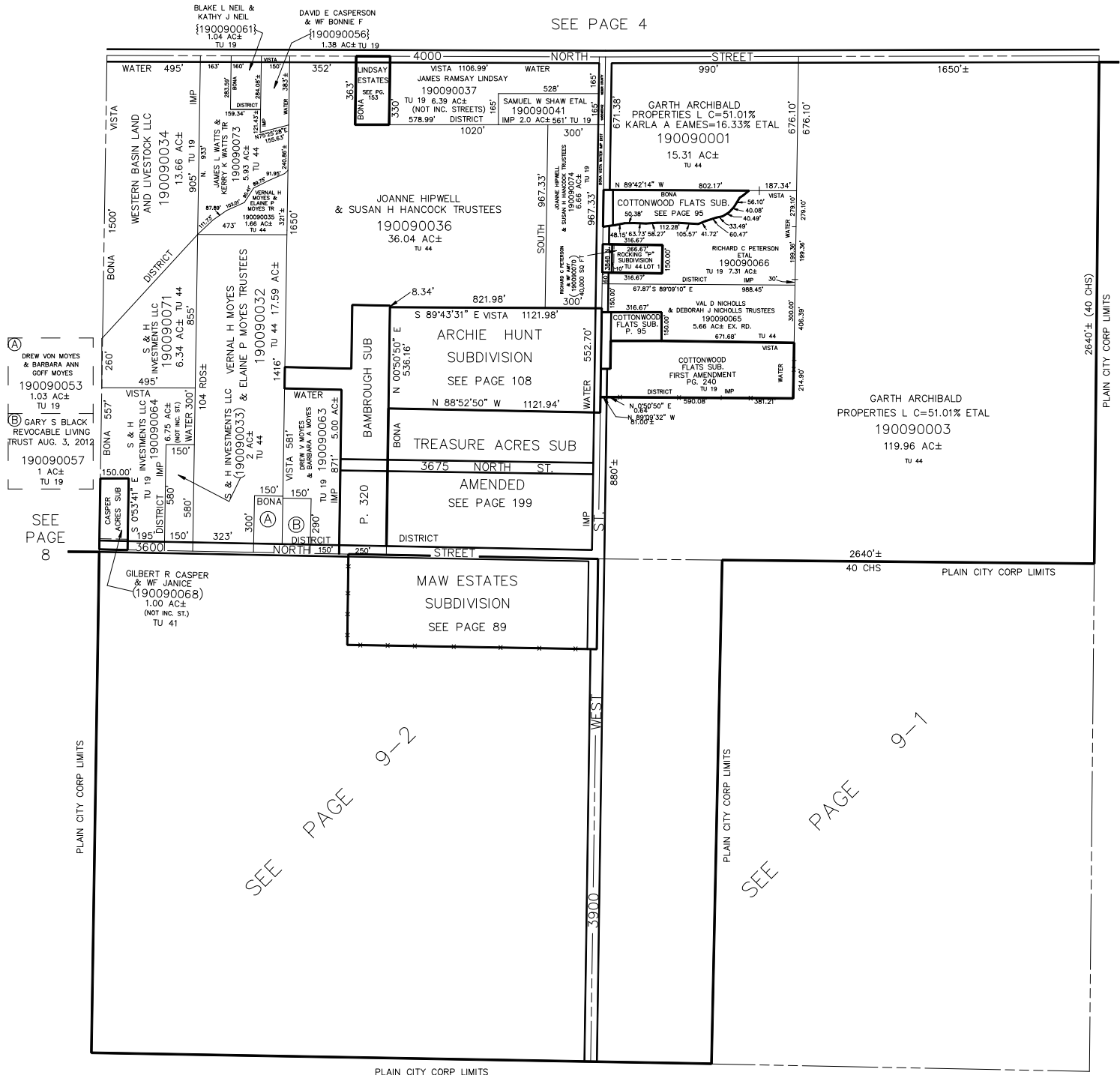
SECTION 21, T.7N., R.2W., S.L.B. & M.

IN WEBER COUNTY

TAXING UNIT: 19, 44

SCALE 1" = 400'

SEE PAGE 4



(A) DREW VON MOYES & BARBARA ANN GOFF MOYES
190090053
1.03 AC±
TU 19

(B) GARY S BLACK REVOCABLE LIVING TRUST AUG. 3, 2012
190090057
1 AC±
TU 19

SEE PAGE 8

PLAIN CITY CORP LIMITS

SEE PAGE 10

SEE PAGE 9-2

SEE PAGE 9-1

SEE PAGE 26

SEE PAGE 23